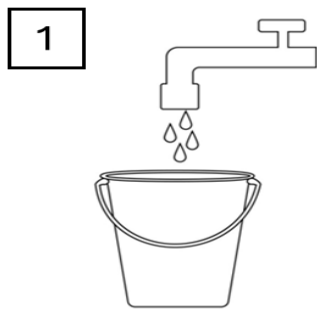


## Household Bleach for Boot Baths

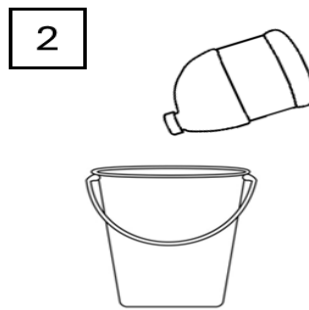
*Ana M. Pastrana – UC ANR - Plant Pathology Advisor for Imperial, San Diego, and Riverside counties.  
ampastranaleon@ucanr.edu*

### How to use:

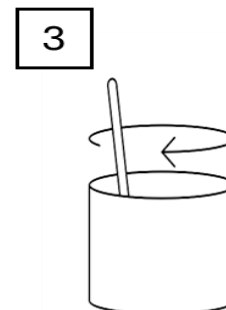
Percent of sodium hypochlorite (NaClO) in commercial bleach (see the label)	Quantity of commercial bleach	Quantity of water	Final amount of the mix
5.25%	0.42 cups (3.38 oz) (100 ml)	3.8 cups (30.43 oz) (900 ml)	4.2 cups (33.81 oz) (1,000 ml)
6.0%	0.37 cups (2.95 oz) (87.5 ml)	3.9 cups (30.86 oz) (912.5 ml)	4.2 cups (33.81 oz) (1,000 ml)
8.25%	0.27 cups (2.15 oz) (63.6 ml)	4.0 cups (31.66 oz) (936.4 ml)	4.2 cups (33.81 oz) (1,000 ml)



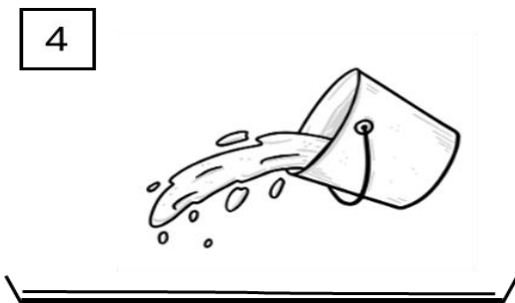
1  
Pour water into a bucket as indicated



2  
Add household bleach as indicated



3  
Stir to mix



4  
Pour into boot bath

- ❖ Short-lived solution: the chlorine concentration reduces by half every two hours.
- ❖ Can damage plastics and metals with repeated use.