



# NAVIGATING NUTRIENT MANAGEMENT IN LOS ANGELES COUNTY

Ariana McCray  
Program Director  
Los Angeles Irrigated Lands Group  
October 15, 2024



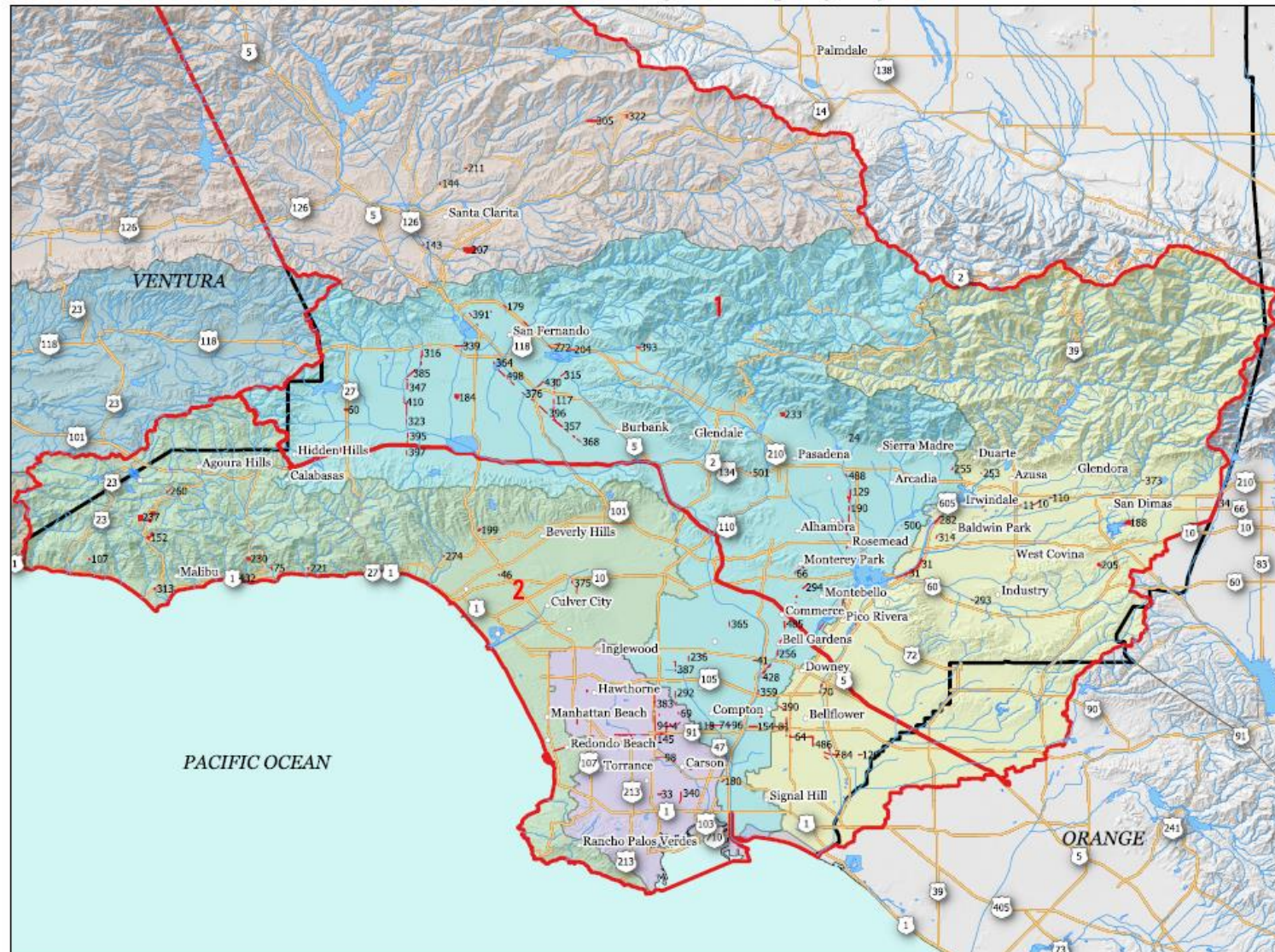


## Region 4

- VCAILG  
80,000  
irrigated acres
- LAILG  
1,536  
irrigated acres



**FIGURE 1** Los Angeles County Irrigated Lands Group  
Los Angeles Sampling Regions and Watersheds



**Legend**

- Enrolled Grower and Number
- ▬ Sampling Region 1
- ▬ Sampling Region 2
- ▬ LA County Boundary
- ▬ CA State Road and Number
- Water Bodies
- Flowlines
- LA Cities

**Watersheds**

- Callegus Creek
- Dominguez Channel LA LB Harbor
- Los Angeles River
- Misc. Ventura Coastal Stream
- Santa Clara River
- San Gabriel River
- Santa Monica Bay
- Ventura River



0 5 10 M



Scale: 1 Inch = 5 Miles

Prepared by:



1891 Goodyear Ave., Suite 621, Ventura CA, 93003  
(855) 682-1802 | [www.pacrl.com](http://www.pacrl.com)





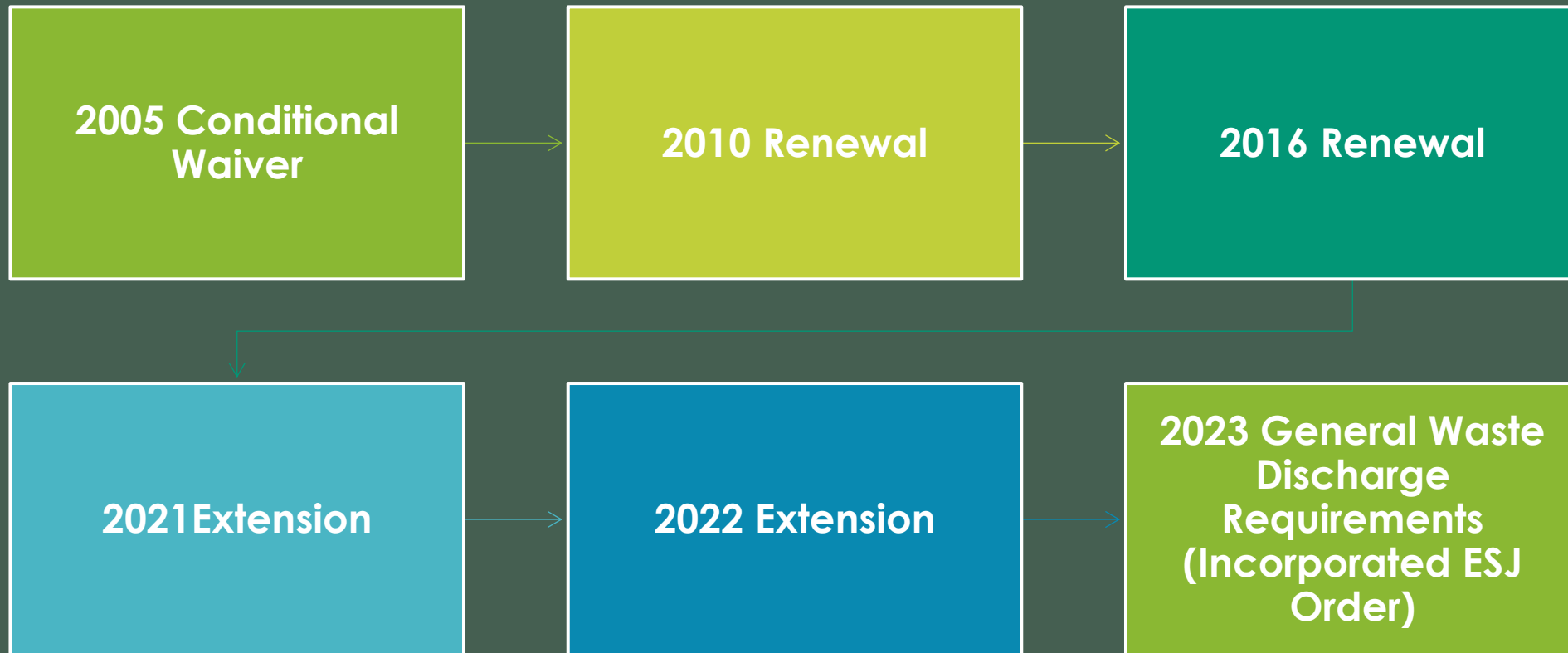
# We are a unique Irrigated Lands Group

- Scattered about an intensely urban area
- We sample at edge of field
- Only irrigated lands group with no irrigated runoff

# Total Nitrogen Removed Reporting Exemptions

- Growers that (1) operate in areas with evidence of no or very limited nitrogen impacts to surface water or groundwater, (2) have minimal nitrogen inputs, and (3) have difficulty measuring yield;
- Diversified socially disadvantaged growers, as defined by the Farmer Equity Act of 2017, 117 with (1) a maximum total acreage of 45 acres, (2) gross annual sales of less than \$350,000, and (3) a crop diversity greater than 0.5 crops per acre (one crop for every two acres);
- Growers with (1) a maximum total acreage of 20 acres, and (2) a crop diversity greater than 0.5 crops per acre (one crop for every two acres).

# Timeline







## PROPOSED LANGUAGE:

For Los Angeles County nurseries only, a field can be a single location; however, each crop in the location must be reported separately.

For Los Angeles County container nurseries, a crop is considered all the plants of the same varietal and in the same size container.





44  
different  
crops





35  
different  
crops





20 different  
crops on just  
one acre of  
a much  
larger  
nursery.





Approx. 150  
crops per  
acre



Over 200 crops per acre



7 Different crops in less than 1/20<sup>th</sup> of an acre





# HARVEST VARIABLES

30-60 DAY CROPS



30 YEAR CROPS





## APPROVED LANGUAGE:

A FIELD IS A CONTIGUOUS PIECE OF LAND THAT HAS THE SAME CROP PLANTED ON IT. THERE CAN BE MULTIPLE FIELDS ON A SINGLE PARCEL AND A FIELD CAN SPAN ACROSS MULTIPLE PARCELS.

FOR LOS ANGELES COUNTY NURSERIES ONLY, A FIELD CAN BE A SINGLE CONTIGUOUS LOCATION.





# contiguous

[ kuhn-tig-yoo-uhs ]    ☒ Phonetic (Standard)    ☐ IPA

## adjective

- 1 touching; in contact.

**Synonyms:** [adjoining](#)

- 2 in close proximity without actually touching; [near](#).

**Synonyms:** [adjacent](#)

- 3 adjacent in time:

| *contiguous events.*







# Grower Requirements



ENROLLMENT



PAY ANNUAL FEES



COMPLETE 2 HOURS OF  
EDUCATION EACH YEAR



COMPLETE REQUIRED  
PAPERWORK



IMPLEMENT AND  
DOCUMENT BEST  
MANAGEMENT  
PRACTICES (BMPS) AS  
REQUIRED BY LAILG



# Challenges



ENROLLMENT



DATABASE



IMPLEMENTATION



A photograph of a nursery landscape with rows of plants in black pots, green support stakes, and a white truck in the background under a clear blue sky.

# THANK YOU

**Ariana McCray**  
Program Director  
Los Angeles Irrigated Lands Group  
[ariana@nurserygrowers.org](mailto:ariana@nurserygrowers.org)